



## Please Read Carefully

### Prior to Installation

- Use caution and always wear eye protection.
- Avoid skin contact with fuels and oils.
- If you don't feel confident installing this product, please seek professional assistance.

### What's Included in your kit

- |                         |                             |
|-------------------------|-----------------------------|
| A) Damper Mount         | D) Steering Stem Seal Rings |
| B) Billet Bearing Tower | E) Bar Mount Adaptors       |
| C) Damper Mount Bolts   | F) Replacement Keys         |

**\* Note: the contents of your kit will vary depending on which model you've ordered.**

# Installation Instructions

---

## Compress the Fork Assembly -

Since we'll be removing the top Triple Clamp, it's necessary to hold the forks in place so they do not fall out of the steering stem while installing the new Stem Seal Rings.

Remove the seat and the plastic decorative cover surrounding the ignition switch (it will pop off with a bit of pulling)

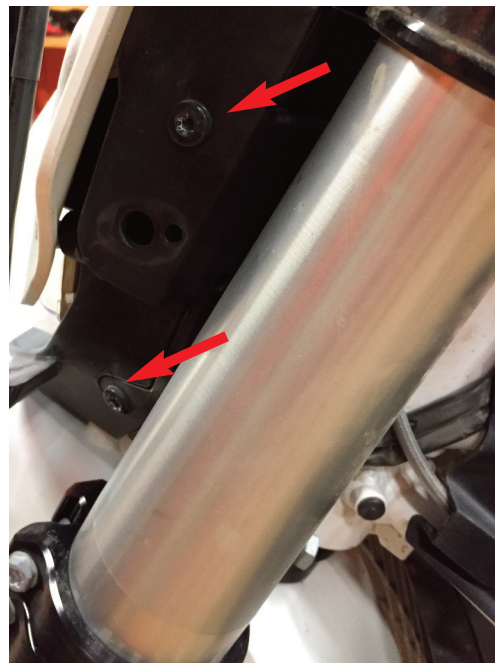
Place the bike on a sturdy center stand, then use a ratcheting tie-down between the top of the frame just behind the ignition key, and the front rim, slightly compressing the fork tubes and holding the fork assembly firmly in place.



---

## Open Up the Headlight Assembly -

Remove the 4 Torx screws holding the Headlight Assembly together, pull the front mask off and let it hang to the side from the attached wires. Remove the two screws that attach the Headlight Assembly mounting plate to the top triple clamp.



## Installation Instructions

### Remove the Handlebar, Bar Mount and Upper Triple Clamp -

Remove the 4 bolts securing the handlebar to the bar mount. Lift the bars off and set them forward, out of the way until re-installed. Remove the bar mount large number 45 Torx wrench from the top, and a 17mm wrench from the bottom. Lift off the bar mount and push the attachment nuts out through the bottom of the triple clamp. Remove the rubber mounting cones and set aside, they will not be used during re-assembly.

Loosen and remove the steering stem bolt in the center of the top triple clamp. Loosen but do not remove the 4 pinch bolts securing the triple clamp to the fork tubes.

Either with the palms of your hands or a soft-blow hammer, gently tap the top triple clamp up off the fork tubes and set aside.



---

### Remove O-ring and Dust Cap -

Remove the center o-ring, dust cap, and under the dust cap the stock rubber stem seal. Set aside all but the o-ring, which will be re-used during assembly.





# Installation Instructions

## Install the New Outer Seal Ring -

Install the out seal ring by gently tapping it in place inside the steering head.



---

## Install the Inner Seal Washer -

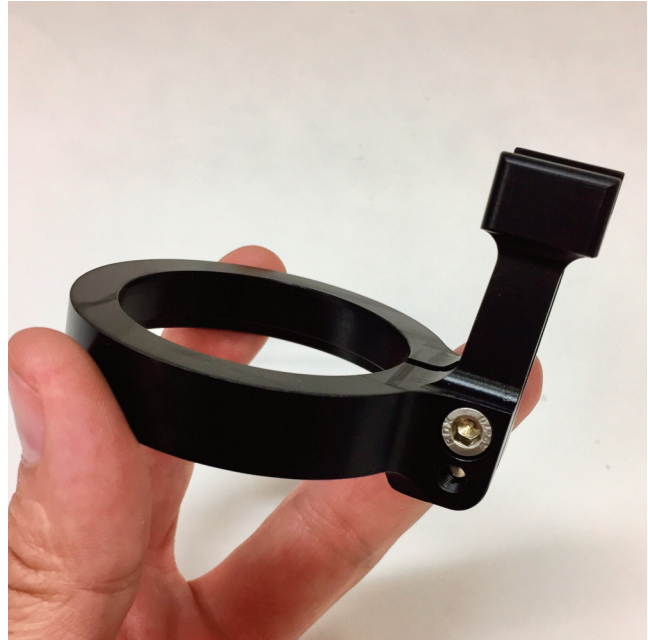
Generously grease the inner seal washer with bearing grease and place it over the steering stem. At this point you may need to manipulate the front wheel/steering stem to allow the washer to drop inside the outer seal ring as the forks have a tendency to droop a bit when the triple clamp is removed. Once the inner washer is properly in place, install the o-ring that was previously removed.



# Installation Instructions

## Install the Damper Tower -

Loosen the 2 hex screws on the tower assembly and gently place it over the new sealing ring. Gently tap the tower into place until it fully seats over the outer sealing ring. Rotate the tower so it is aligned with the frame, pointing directly rearward. Once everything looks well seated and properly aligned, tighten the two clamping screws, alternating from one to the other until the tower is securely in place.



---

## Install the Upper Triple Clamp -

Before installing the upper triple clamp, check and confirm that the sealing washer is still securely in place within the outer sealing ring. The one pictured here has popped out of place and must be re-inserted back inside the sealing ring before the triple clamp is re-installed.

Place the triple clamp over the fork tubes and gently tap it down into place. Visually check from time to time that the sealing washer has remained properly seated until the triple clamp rests firmly in place.



# Installation Instructions

## **Adjust the Steering Bearings -**

Before tightening the 5 retaining bolts on the triple clamp, you must adjust the bearing load using the steering stem bolt. Slightly tighten the steering stem bolt, then with the front wheel still off the ground grab the wheel and try to move it forwards and back. You want to gently tighten the steering stem bolt until you feel no play in the bearings and no binding when turned from side to side.

Once the bearing is properly adjusted tighten the remain 5 bolts on the triple clamp, torquing them to 18 ft/lbs each.

---

## **Install the Damper Mount -**

Insert the new damper mount in the triple clamp and secure it in place using the two bolts and thick washers included in the kit. Tighten these bolts to 32 ft/lbs each.

---

## **Installing and Trimming the Ignition Valance -**

Before the plastic ignition valance can be re-installed you will need to trim a small section from the front of the valance to clear the Bearing Tower

## **Spare Key Blanks -**

Because the factory Husqvarna keys are ridiculously tall, we've included a pair of KTM key blanks that will allow the key to clear the damper housing.

## **Install the Damper -**

Install the damper on the mount using the provided bolt and black aluminum spacer. Torque the center bolt to 18 ft/lbs.