



Please Read Carefully

Prior to Installation

- Use caution and always wear eye protection.
- Avoid skin contact with fuels and oils.
- If you don't feel confident installing this product, please seek professional assistance.

What's Included in your kit

- | | |
|---------------------------------|-----------------------------------|
| A) 1 x SDX505 Damper | E) 1 x Stabilizer Mounting Plug |
| B) 1 x Damper/Bar Mount | F) 3 x M10 Mounting Bolts |
| C) 2 x Isolating Bar Support | G) 4 x Riser Nut and Washer |
| D) 1 x Bridge Kit with Hardware | H) 1 x Comprehensive Instructions |

Installation Instructions

Note: Prior to installing the PowerCell Performance SDX505 steering stabilizer, you must first remove the factory stabilizer located underneath the steering head. Please refer to the factory service manual for removal instructions and procedures.

Remove Gas Tank -

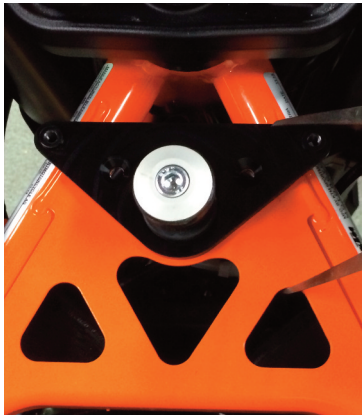
Follow the directions provided in the factory service manual to properly remove the gas tank, exposing the top of the frame.



Align the Base Plate -

Using the bolt, rubber grommet and aluminum bushing from the front tank mount, attach the Base Plate to the frame, just snug enough so you can still move it by pushing on either side.

Using either a small ruler or dividers (as shown) adjust the plate so it is square with the frame head as pictured. **Try to be as accurate as possible!**



Drill out the Frame Head -

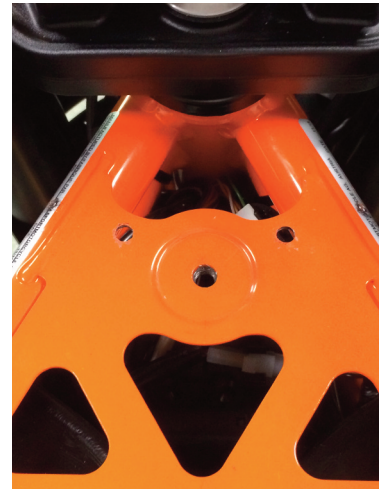
Once the plate is accurately aligned, tighten down the tank mount bolt to lock the plate in place. Now, using a 1/4" bit, drill 2 holes in the frame to match the 2 counter sunk holes in the base plate.



Installation Instructions

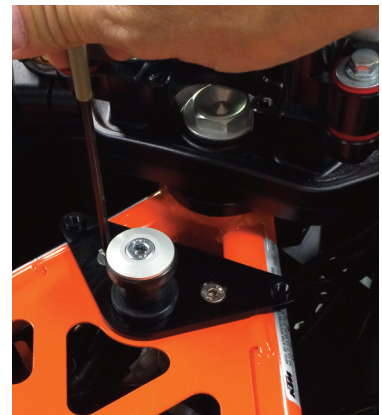
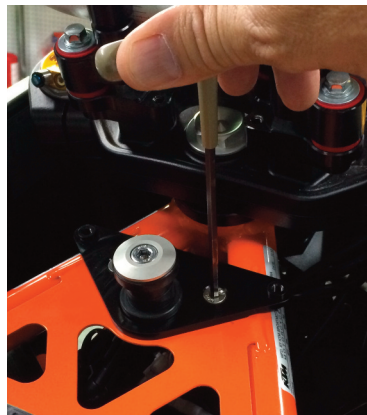
Clean the Frame Head -

Remove the Base Plate and carefully clean away any burrs or metal shavings left over from drilling the frame head.



Re-Install the Base Plate -

Re-install the base plate using the 2 counter sunk screws and the 2 Nylock nuts provided.



Re-Install the Gas Tank -

Install the gas tank per instructions in the factory service manual. Be careful when connecting the fuel lines and the fuel pump power lead. Also don't forget to re-attach the tank breather and fuel level sensor wire.



Installation Instructions

Assemble the Bridge -

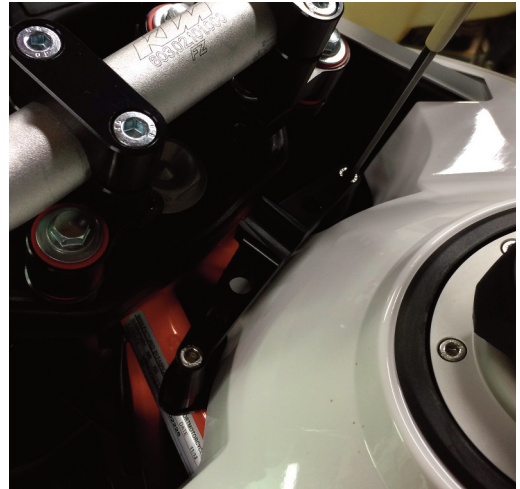
Assemble the bridge and 2 towers using the stainless screws and o-rings provided. The purpose of the o-rings is to keep the towers attached to the bridge while installing and removing the stabilizer from the bike.

Note: The Bridge and the Stabilizer need to be removed prior to removing your gas tank for service. We've taken this into consideration when designing our stabilizer mount, and have attempted to make this process as simple as possible.



Install the Bridge -

Install the Bridge assembly on to the base plate. Snug down the 2 allen screws. Do not use any type of thread locker on these screws as they need to be removed during service to access your air filter, etc.



Install the Stabilizer Mount -

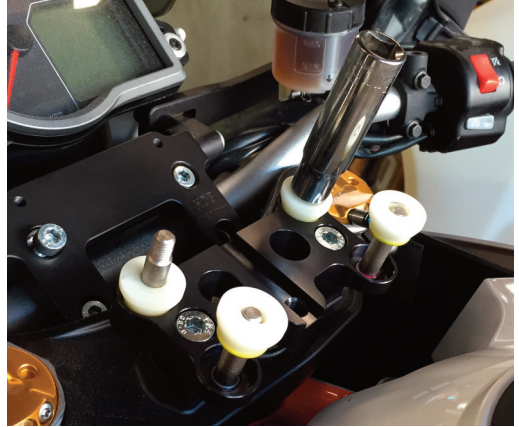
Remove the handlebar clamps and lift the bars up and forward, resting them just in front of the upper triple clamp. Now remove and set aside the factory handlebar risers... we'll be re-using them a little later. With a 7mm Allen key, install the new stabilizer mount as pictured, using 2 of the M10 bolts provided. We recommend applying Loctite 243 (Blue) and torquing the bolts to 40Nm (29.5 ft-lbs).



Installation Instructions

Install the Lower Bushings -

Using a socket or small pipe, tap the taller of the 4 rubber bushings onto their studs with the yellow plastic bearing facing downwards.

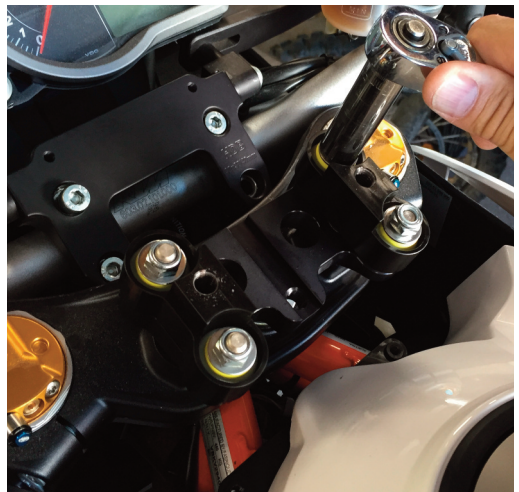


Install the Bar Mounts -

Once the lower bushings are in place, you can complete the installation of the bar mounts by adding the bar supports, followed by the smaller upper bushings (yellow bearing side up), washers, and finally M8 nuts. Torque the nuts to 20Nm (14.8 ft-lbs)

Important Note

The bar supports can be installed in either of 2 positions, forward and back. Whichever position you choose, they should be installed with the flat sides towards each other (as pictured).



Install the Bar Risers -

Install the factory handlebar risers using the original bolts. Once again you can fine-tune your bar position by rotating the risers to move the bars forwards or back. When you've decided on position, we recommend using Loctite 243 (Blue) and torquing the bolts to 40Nm (29.5 ft-lbs).

You can now re-install your handlebars and mounting caps, torquing them to 20Nm (14.8 ft-lbs). No need for thread locker on these bolts.



Installation Instructions

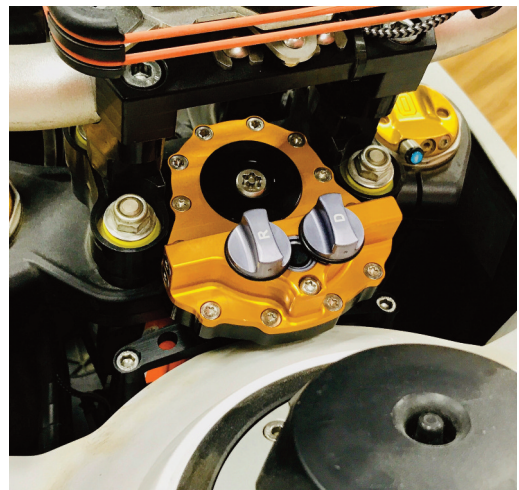
Assemble the Damper -

Insert the damper mounting bushing into the center opening of the damper. Slip the remaining M10 mounting bolt into the bushing so that the threads protrude from the underside of the damper approximately 12mm.



Mount the Damper -

Using a 7mm Allen Key, mount the damper on the bike, making certain that the roller bearing underneath aligns properly within the slot on the bridge. Torque the Allen bolt to 40Nm (29.5 ft-lbs)



Enjoy Your New SDX505 Steering Stabilizer by PowerCell Performance!